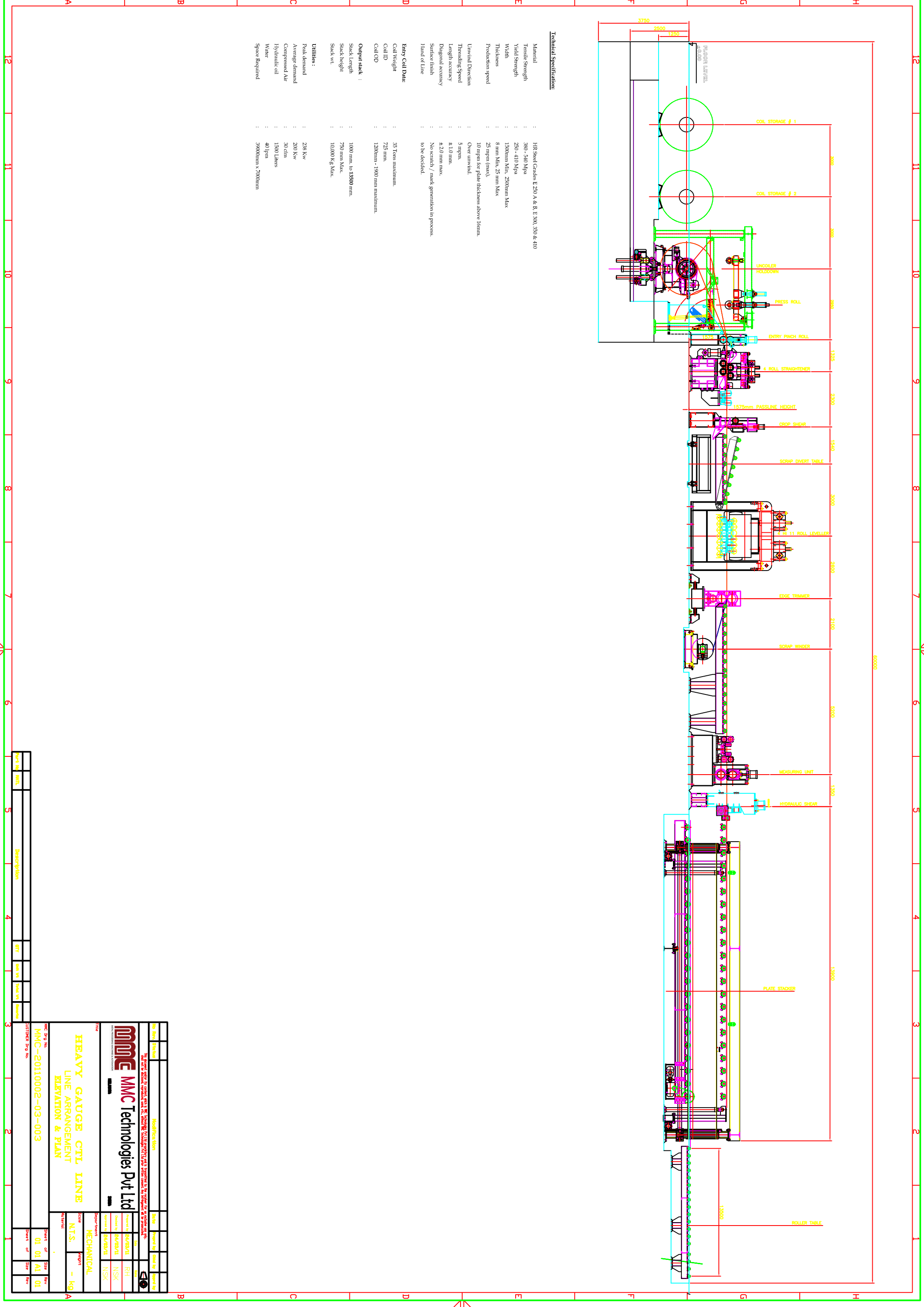


**Technical Specifications:**

- Material : HR Steel Grades E 250 A & B, E 300, 350 & 410
  - Tensile Strength : 380 - 540 MPa
  - Yield Strength : 250 - 410 MPa
  - Width : 1300mm Min, 2500mm Max
  - Thickness : 8 mm Min, 25 mm Max
  - Production speed : 25 mpm (max), 10 mpm for plate thickness above 16mm.
  - Unwind Direction : Over unwind
  - Threading Speed : 5 mpm
  - Length accuracy : ±1.0 mm
  - Diagonal accuracy : ±2.0 mm max
  - Surface finish : No scratch / mark generation in process.
  - Hard of Line : to be decided.
- Entry Coil Data:**
- Coil Weight : 35 Tons maximum.
  - Coil ID : 725 mm.
  - Coil OD : 1200mm - 1900 mm maximum.
- Output stack :**
- Stack Length : 1000 mm, to 13500 mm.
  - Stack height : 750 mm Max.
  - Stack wt. : 10,000 Kg Max.
- Utilities :**
- Peak demand : 238 Kw
  - Average demand : 200 Kw
  - Compressed Air : 30 cfm
  - Hydraulic oil : 1300 Litres
  - Water : 40 lpm
  - Space Required : 39000mm x 27000mm



No. Rev. / Revision		Modification	
<p><b>MME</b> <b>MME Technologies Pvt Ltd</b></p> <p><b>HEAVY GAUGE CTL LINE</b> LINE ARRANGEMENT ELEVATION &amp; PLAN</p> <p>MMC-20110002-03-003</p>			
Author	Checked	Approved	Issued
Design	Reviewed	Accepted	Released
Drawn	Verified	Confirmed	Final
Created	Validated	Finalized	Archived
Project	Client	Contract	Location
M.T.S.	NSK	NSK	NSK
MECHANICAL	REPORT	-	KG
Sheet of	01	01	01
Sheet of	01	01	01